



FLYDIGI

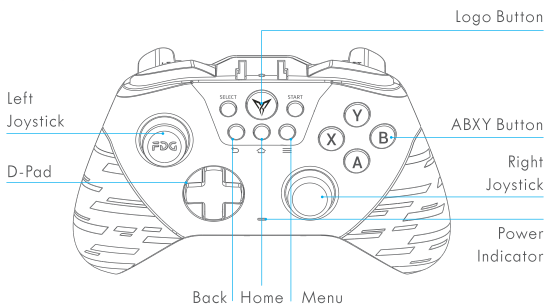
Flydigi X8 Pro Wireless Controller

# User Manual

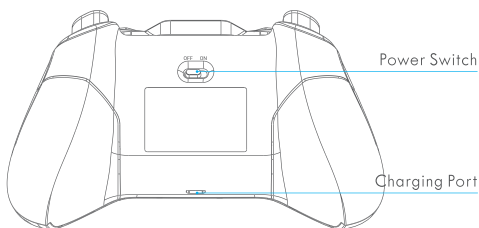


## 1. Product Introduction

### Front >

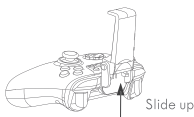


### Back >



## Bracket Description

Take out the bracket by sliding it upward out of the slot. It accommodates cellphones with width ranging from 52.8mm to 100mm.



The detachable bracket can support cellphones to stand on the desk.



## 2. Basic Operation

Power on	Slide power switch to ON, green power indicator will flash twice before going out.
Wake up from standby	Controller goes to standby mode after it's not used for a period time. To use it again, press Logo button to automatically reconnect.
Power off	Slide power switch to OFF, controller will be shut down.
Charging	Red power indicator is steadily on
Charging complete	Red power indicator goes out
Low power	If power is lower than 20%, green power indicator is flashing slowly If power is lower than 5%, green power indicator is flashing quickly

### 3. Controller Mode



Mode	Bluetooth Mode Hold and press B+Logo buttons for 5 seconds
	Wireless Android Mode Hold and press A+Logo buttons for 5 seconds
	Xinput Mode Hold and press X+Logo buttons for 5 seconds
Connection Method	2.4G Wireless
	Bluetooth
System Supported	Android
Device Supported	Cellphone/Tablets
	TV/Set-top Box/PC
Experience Supported	Air Mouse
	Motion Sensing
	Authentic Vibration
Upgrade Supported	Firmware Upgrade

Note: For mobile games, select Bluetooth mode to play on the cellphone;  
For playing Android mobile games on computer simulator, select wireless Android mode;  
For computer games, select Xinput mode.

## 4. Play Games on Android Cellphone and Tablet

(Bluetooth Mode)

### 1. Download Flydigi Gamepad Assistant

Scan QR code to download and install



### 2. Connect Controller

Step 1: Turn on power, press and hold Logo button for 5 seconds, then controller goes into pairing mode (White Logo light flashing). If the light is not white at this time, press and hold B+Logo buttons in sequence for 5 seconds, then it will be switched back to Bluetooth mode.



Press and hold for 5 seconds

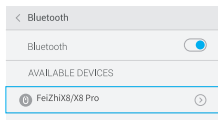
Step 2: Click Settings — Bluetooth on the cellphone , turn on Bluetooth, click on FeizhiX8 / X8 Pro of the search result and start pairing with cellphone, after pairing is successful, white Logo light stays steadily on.



Settings



Bluetooth



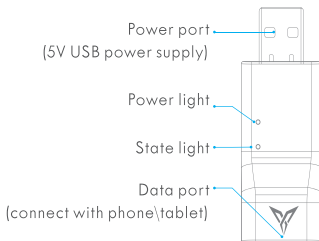
Note: For paired controller , it's only necessary to press Logo button when re-connecting next time, not need to hold.



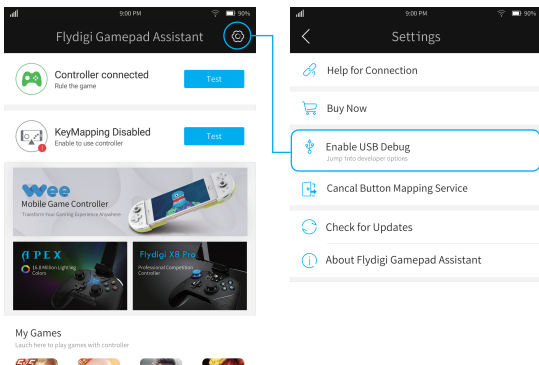
Click

### 3. Activate Button Mapping

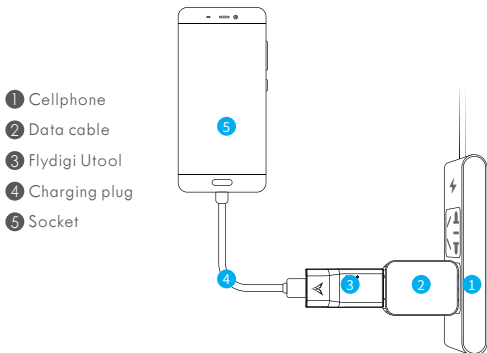
Flydigi Utool is a tool custom-designed for Android cellphone and tablet specifically to turn on button mapping services, it's root-free and no need for computer.



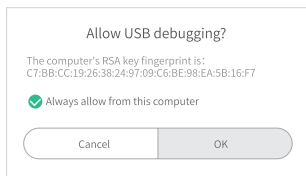
#### 3.1 Open Flydigi Gamepad Assistant, click Settings—Enable USB Debug



3.2 Connect Utool in sequence following 1-5 as shown in the figure, red light stays steadily on.



3.3 Allow USB debugging on the cellphone, click OK.



3.4 After completing activation, unplug the Flydigi Utool.



## 5. Play Games on Set-Top Box / Smart TV or PC Android Simulator

(Wireless Android Mode)

### Set-Top Box/Smart TV (TV Game)

---

1. Search TV app market and install in the TV browser.
2. Download games in the app market and install.
3. Plug receiver into the USB port of set-top box/smart TV.
4. Turn on power of controller, press and hold the A+Logo buttons in sequence for 5 seconds, the controller will be switched to wireless Android mode (Yellow Logo light stays steadily on). The controller will connect to receiver.



Press and hold A + Logo for 5 seconds

Note: If yellow Logo light keeps flashing slowly and unable to connect after switching to wireless Android mode, the controller needs to be paired to the receiver:

1. First ensure that you have switched to yellow light mode.
  2. Restart controller, press and hold Logo button for 5 seconds, the light will flash quickly and the controller will enter pairing mode. Plug and unplug the receiver once and keep the controller within 20cm from the receiver. If yellow Logo light flashes slowly twice, then stays steadily on, it indicates successful pairing.
5. If the controller is not used for a period of time, it will enter standby mode, press the Logo button again to turn it on.

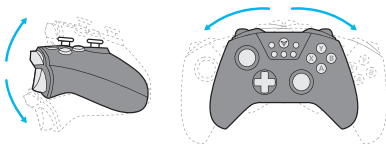
### Air Mouse Function (Only Supports Wireless Android Mode)

---

Air Mouse is a unique function of Flydigi controller that can utilize controller to simulate mouse operation, to facilitate users to click like a mouse anywhere as you wish.

After yellow Logo light stays steadily on, press Logo button to turn on / off Air Mouse function. After it's turned on, LT will be left mouse button.





Note: Use center point of controller as the axis, rotate it up and down and side to side, so you can control the Air Mouse pointer movement.

## 6. Play Games on Computer (Xinput Mode)

PC games can support controller without driver.

1. Plug receiver into computer USB port.
2. Turn on power of controller, press and hold the X+Logo buttons in sequence for 5 seconds, the controller will be switched to Xinput mode (Blue Logo light stays steadily on). The controller will connect to receiver.



Press and hold X+Logo buttons for 5 seconds

Note: If Blue Logo light keeps flashing slowly and unable to connect after switching to Xinput mode, the controller needs to be paired to the receiver:

1. First ensure that you have switched to blue light mode.
  2. Restart controller, press and hold Logo button for 5 seconds, the light will flash quickly and the controller will enter pairing mode. Plug and unplug the receiver once and keep the controller within 20cm from the receiver. If blue Logo light flashes slowly twice, then stays steadily on, it indicates successful pairing.
3. If the controller is not used for a period of time, it will enter standby mode, press the Logo button again to turn it on.

## 7. FAQ

### 1 / Light of controller is off

First turn on the power switch and check whether the power is sufficient. If there is electricity but Logo light is still off, please contact customer service.

### 2 / Problem with joystick and button

Controller testing can be done in the Gamepad Assistant.  
Joystick calibration: Press and hold menu + back buttons of the controller at the same time, Logo light flashes slowly twice to complete calibration.

### 3 / Shooting center will automatically drift if motion sensing of controller is used in shooting games

If view angle cannot be controlled after pressing and holding the LB button and swinging controller, please leave it on the desk for 10 seconds.

### 4 / What if Utool activation is not successful?

1.The red light is flashing all the time: There may be a problem with data cable or USB port of the cellphone. Please change and try again (Some data cables can charge but cannot transmit data.)

2.Blue light is always flashing quickly or it is not on: Make sure USB debugging is enabled and click OK in the popup box "Allow USB debugging"; Unplug and plug in USB debugging data cable and try again.

3.Still unable to activate after red and blue lights are steadily on: Please restart the cellphone, wait a few minutes to try again.

4.Blue light is flashing slowly: You may have not installed Flydigi Gamepad Assistant, please return to the first step to install the App.

## 8. Performance Parameter

Platform Supported	Android	Cellphone and tablet with OS of Android 4.4 or above and Bluetooth 4.0
	PC	Windows XP and above version OS
Wireless RF	2.4-2.483GHz, Bluetooth 4.0 BLE	
Usage Distance	>10m	
Product Size	155.5x103.5x64.5mm	
Operating Current	Bluetooth Mode	Operating current <4mA, after enabling motion sensing, operating current <8mA; standby current <15uA
	Wireless Android Mode	Operating current<8mA, standby current<15uA
	Xinput Mode	Operating current<8mA, standby current<15uA
Rated Input	Charging Voltage: 5V. Charging current: <120mA	
Working Hours	80 hours under Bluetooth mode (motion sensing not enabled) 40 hours under wireless Android mode/Xinput mode	
Storage Temperature	-20°C~+80°C	
Working Temperature	-5°C~+50°C	



F L Y D I G I

Shanghai Flydigi Electronics Technology Co.,Ltd.

[www.flydigi.com/en](http://www.flydigi.com/en)